



Executive Report

Section 1 - Using our capacity

Section 2 - Distinguishing characteristics of the ANU

Section 3 - Key Performance Indicators

Section 4 - Internationalisation

Section 1 - Using our capacity

Table 1.1 - IAS Higher Degree Research Students per Academic Researcher

[Back to Contents Page](#)

Table 1.1 - IAS Higher Degree Research Students per Academic Researcher

Research School	2001	2002	2003	2004	2005
Centre for Resource and Environmental Studies	3.00	2.06	2.67	2.72	2.38
John Curtin School of Medical Research	0.92	0.90	0.82	0.80	0.77
Mathematical Sciences Institute	0.92	0.55	0.54	0.85	0.64
Research School of Astronomy and Astrophysics	0.88	1.00	1.19	1.16	1.10
Research School of Biological Sciences	0.88	0.73	0.72	0.65	0.72
Research School of Chemistry	1.04	0.99	1.17	1.22	1.12
Research School of Earth Sciences	0.61	0.57	0.70	0.82	0.85
Research School of Information Sciences and Engineering	2.21	2.09	2.12	2.08	2.70
Research School of Pacific and Asian Studies	1.57	1.29	1.43	1.89	1.99
Research School of Physical Sciences and Engineering	0.69	0.65	0.71	0.72	0.69
Research School of Social Sciences	1.16	0.84	0.88	1.11	1.17

Source: Data Warehouse

[Back to Section 1 Index](#)

Section 2 - Distinguishing characteristics of the ANU

Table 2.1 a - Academic Staff Holding Doctorate Degrees

Table 2.1 b - Academic Staff Holding Master Degrees

Table 2.2 - Median UAI Score of Undergraduate Admissions

Table 2.3.1 - Enrolments by Program Type as at 31 March

Table 2.3.2 - Enrolments by Program Career and Student Origin as at 31 March

Table 2.3.3 - Percentage of Undergraduate Students Enrolled in Combined Programs, by College

Table 2.4.1 - EFTSL by Program Career and Student Origin

Table 2.4.2 - Higher Degree Research EFTSL as a % Share of Total EFTSL

Table 2.4.3 - Higher Degree Research EFTSL by Program Type and Gender

Chart 2.4.4 - Percentage Commencing Domestic Undergraduate by Tertiary Entrance Rank

Table 2.4.5 - Percentage of Cross College Load by Home College

Table 2.5 - Progress Rates by Program Career and College

Table 2.6.1 - Higher Degree Research Completions by College and Student Origin

Table 2.6.2 - Postgraduate Coursework Completions by College and Student Origin

Table 2.6.3 - Undergraduate Completions by College and Student Origin

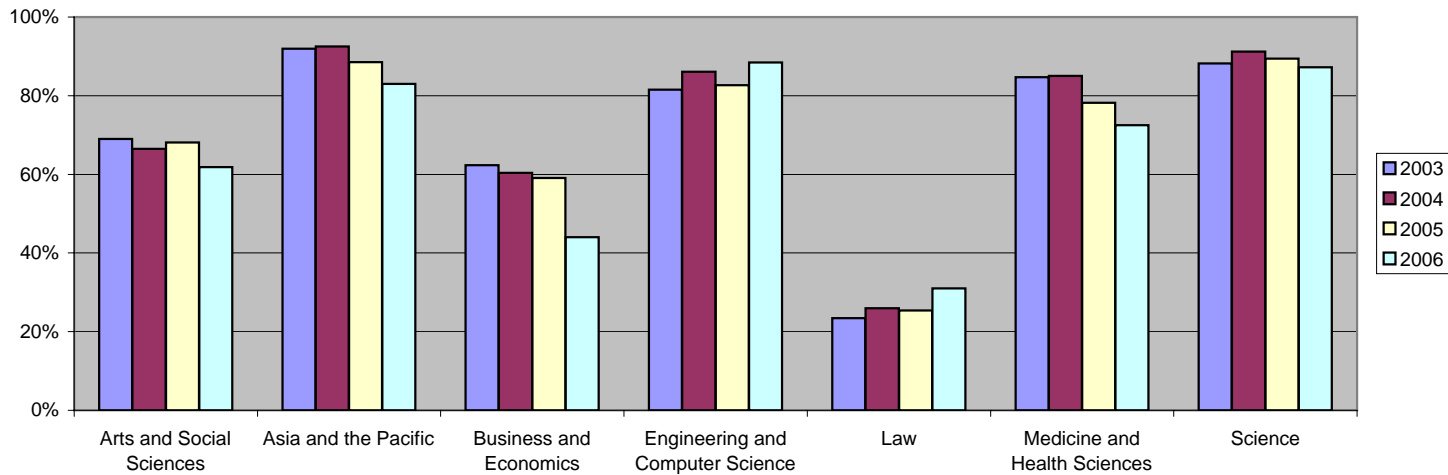
Table 2.7 - ANU Research Programs Supporting Research Priorities

[Back to Contents Page](#)

Table 2.1 a - Academic Staff Holding Doctorate Degrees

College	2003	2004	2005	2006
Arts and Social Sciences	69%	66%	68%	62%
Asia and the Pacific	92%	93%	89%	83%
Business and Economics	62%	60%	59%	44%
Engineering and Computer Science	82%	86%	83%	88%
Law	23%	26%	25%	31%
Medicine and Health Sciences	85%	85%	78%	73%
Science	88%	91%	89%	87%
National Comparison				
The Australian National University	79%	80%	78%	74%
All other Go8 university	53%	61%	60%	na
All Other Australian Universities	46%	49%	49%	na
All Australian Universities	50%	55%	55%	na
All Australian Universities	51%	55%	55%	na

Source: Annual Report

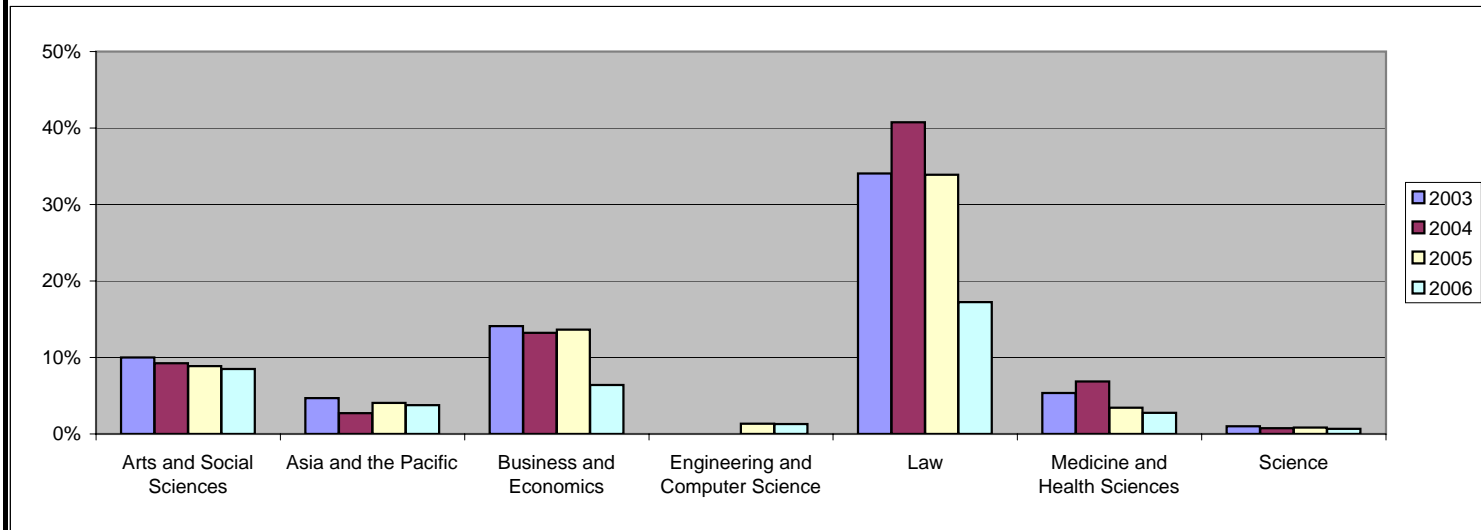


[Back to Section 2 Index](#)

Table 2.1 b - Academic Staff Holding Master Degrees

College	2003	2004	2005	2006
Arts and Social Sciences	10%	9%	9%	8%
Asia and the Pacific	5%	3%	4%	4%
Business and Economics	14%	13%	14%	6%
Engineering and Computer Science	0%	0%	1%	1%
Law	34%	41%	34%	17%
Medicine and Health Sciences	5%	7%	3%	3%
Science	1%	1%	1%	1%
National Comparison				
The Australian National University	6%	6%	5%	4%
All other Go8 university	15%	15%	12%	na
All Other Australian Universities	24%	24%	27%	na
All Australian Universities	20%	20%	18%	na

Source: Annual Report

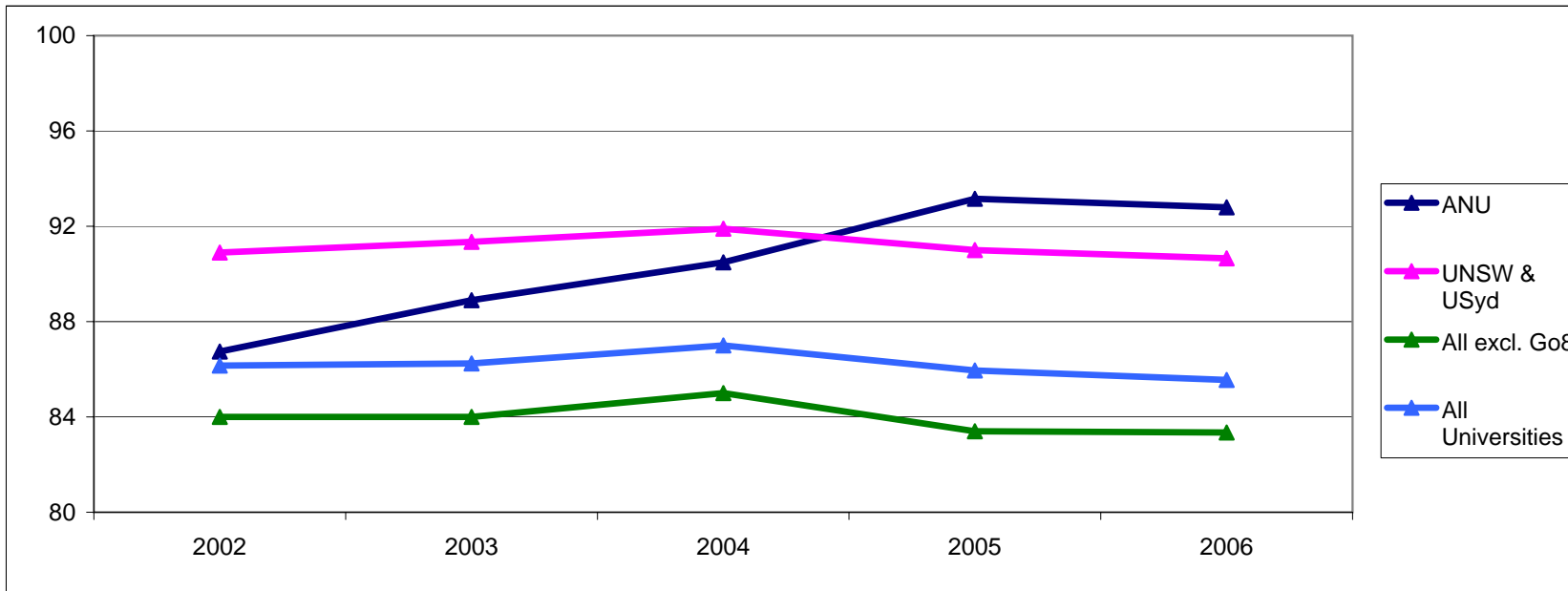


[Back to Section 2 Index](#)

Table 2.2 - Median UAI Score of Undergraduate Admissions

	2002	2003	2004	2005	2006
ANU	86.75	88.9	90.49	93.15	92.8
UNSW & USyd	90.90	91.35	91.90	91.00	90.65
All excl. Go8	84.00	84.00	85.00	83.40	83.35
All Universities	86.15	86.25	87.00	85.95	85.55

Source: Dataware house



[Back to Section 2 Index](#)

Table 2.3.1 - Enrolments by Program Type as at 31 March

Program Career	Program Type	2001	2002	2003	2004	2005
Higher Degree Research	Doctorate by Research	1155	1222	1366	1749	1888
	Master's by Research	87	85	88	105	108
	TOTAL	1242	1307	1454	1854	1996
Postgraduate Coursework	Doctorate by Coursework		6	4	7	11
	Master's by Coursework	764	957	1361	1761	1615
	Graduate Diploma - New	578	617	779	859	731
	Graduate Certificate	21	63	102	98	70
	Qualifying Postgraduate		1	1		
	Cross-Institution - Postgraduate		2	9	18	7
TOTAL	1363	1646	2256	2743	2434	
Undergraduate	Bachelor's Graduate Entry		153	159	154	128
	Bachelor's Honours			25	53	97
	Bachelor's Pass	6845	7512	7899	8222	8128
	Associate Degree					2
	Diploma	64	67	82	70	54
	Cross-Institution - Undergraduate	156	140	128	201	70
TOTAL	7065	7872	8293	8700	8479	
TOTAL		9670	10825	12003	13297	12909

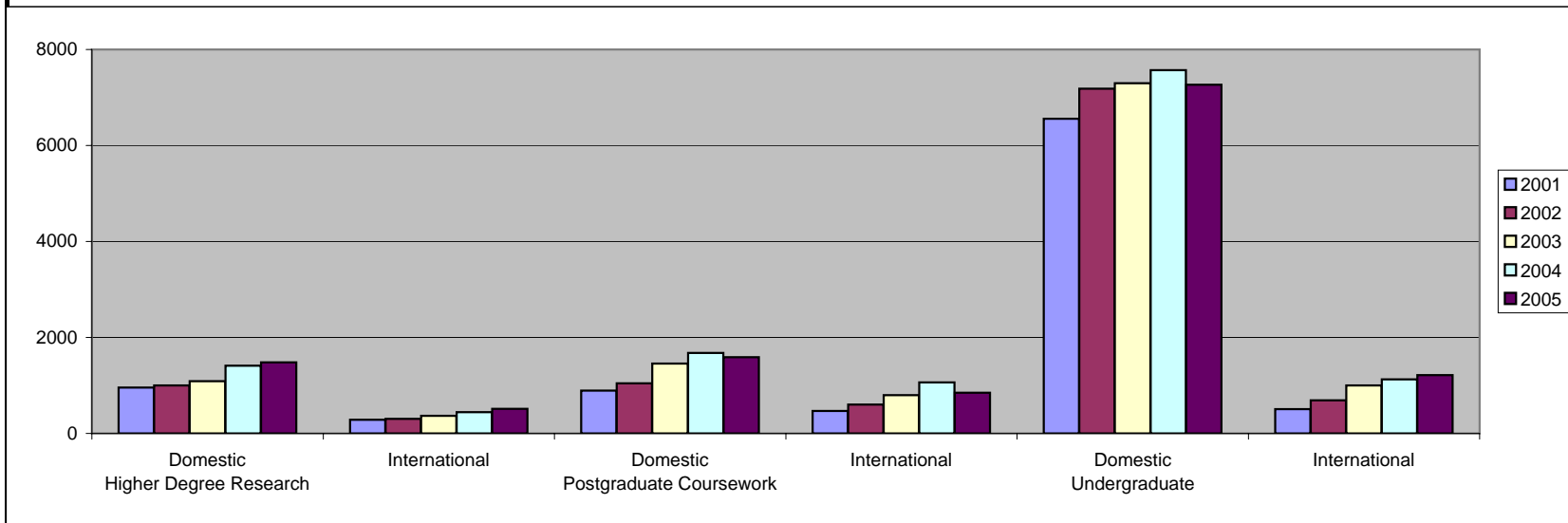
Source: Data Warehouse

[Back to Section 2 Index](#)

Table 2.3.2 - Enrolments by Program Career and Student Origin as at 31 March

Program Career	Origin	2001	2002	2003	2004	2005
Higher Degree Research	Domestic	957	1003	1090	1412	1484
	International	285	304	364	442	512
	Total	1242	1307	1454	1854	1996
Postgraduate Coursework	Domestic	893	1042	1456	1679	1589
	International	470	604	800	1064	845
	Total	1363	1646	2256	2743	2434
Undergraduate	Domestic	6559	7184	7296	7572	7266
	International	506	688	997	1128	1213
	Total	7065	7872	8293	8700	8479
Grand Total		9670	10825	12003	13297	12909

Source: Data Warehouse

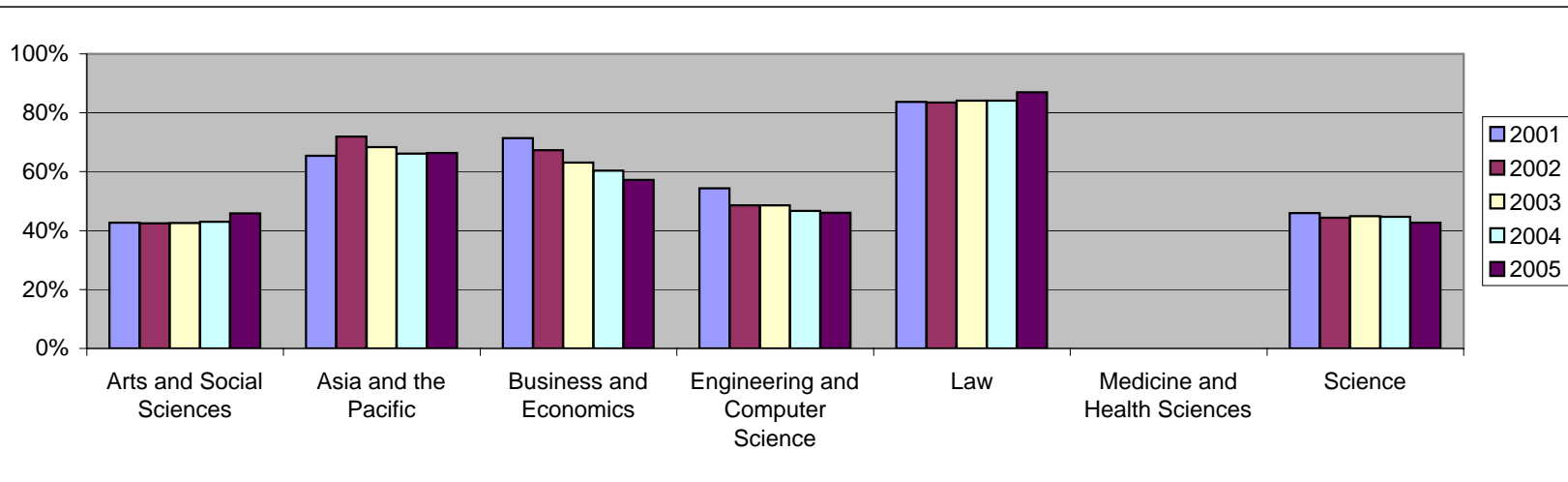


[Back to Section 2 Index](#)

Table 2.3.3 - Percentage of Undergraduate Students Enrolled in Combined Programs, by College

College	2001	2002	2003	2004	2005
Arts and Social Sciences	42.7%	42.4%	42.6%	43.0%	45.8%
Asia and the Pacific	65.4%	72.0%	68.4%	66.2%	66.4%
Business and Economics	71.4%	67.3%	63.1%	60.3%	57.2%
Engineering and Computer Science	54.3%	48.5%	48.6%	46.7%	46.1%
Law	83.7%	83.5%	84.1%	84.1%	86.9%
Medicine and Health Sciences	0.0%	0.0%	0.0%	0.0%	0.0%
Science	46.0%	44.4%	44.9%	44.6%	42.6%

Source: Data Warehouse



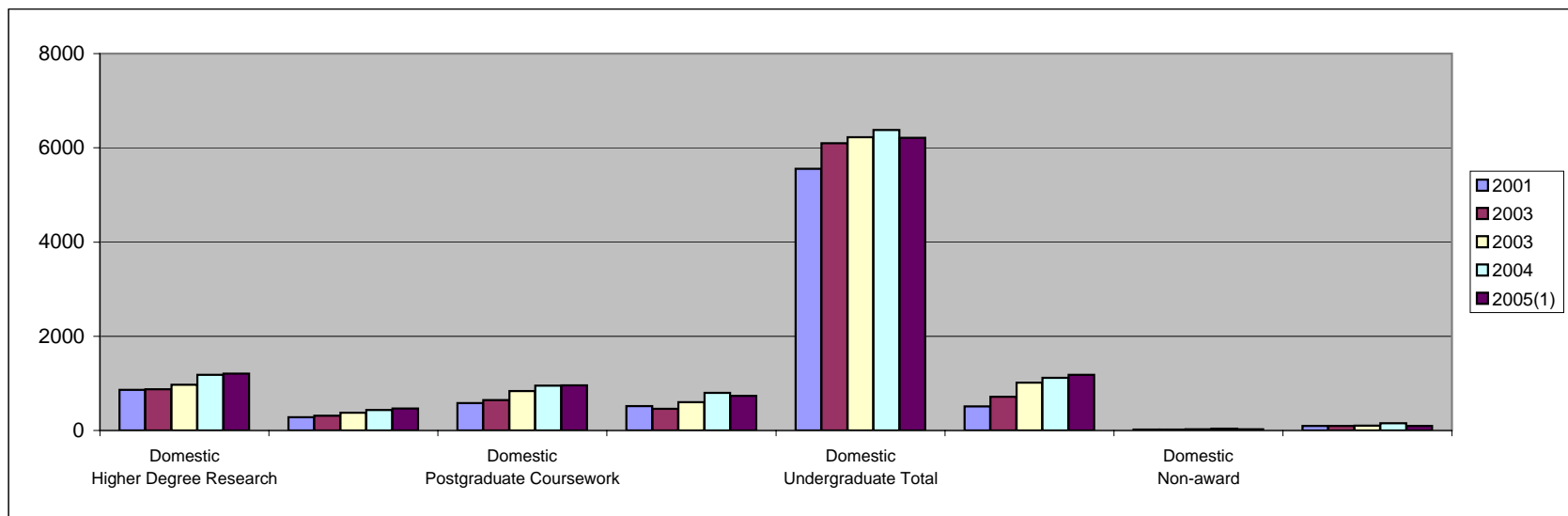
[Back to Section 2 Index](#)

Table 2.4.1 - EFTSL by Program Career and Student Origin

Program Career	Origin	2001	2002	2003	2004	2005	2006 ⁽¹⁾
Higher Degree Research	Domestic	864	873	972	1184	1207	1200
	International	279	312	375	437	469	458
	Total	1142	1184	1347	1621	1676	1657
Postgraduate Coursework	Domestic	584	644	838	952	961	964
	International	518	462	600	796	733	825
	Total	1102	1106	1438	1748	1694	1789
Undergraduate Total	Domestic	5557	6096	6223	6375	6210	6018
	International	508	715	1018	1114	1183	1197
	Total	6066	6811	7241	7490	7393	7215
Non-award	Domestic	22	21	24	36	23	33
	International	93	94	103	156	94	169
	Total	115	115	127	192	117	202
Grand Total		8425	9216	10152	11051	10879	10863

⁽¹⁾ Data for 2006 are based on provisional data submissions to DEST as at 14 November 2006 and, while provisional, use the pre-2005 reporting period Sept-Aug.

Source: Annual Report

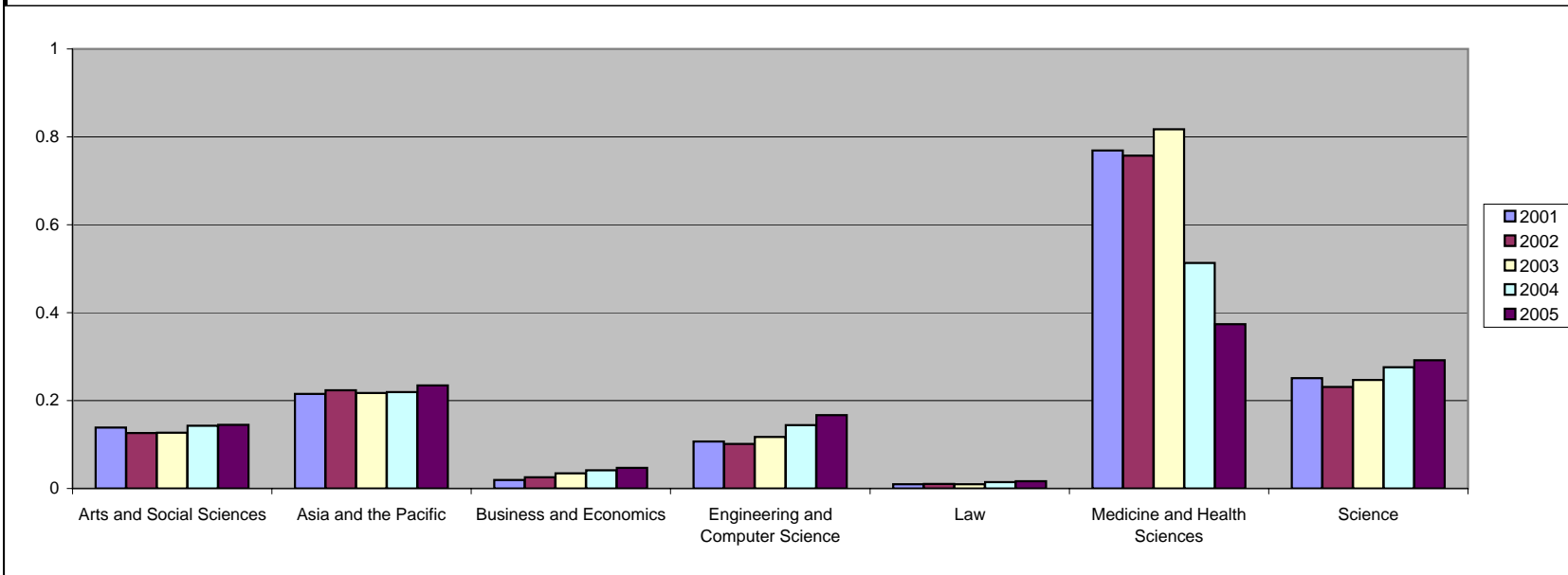


[Back to Section 2 Index](#)

Table 2.4.2 - Higher Degree Research EFTSL as a % Share of Total EFTSL

College	2001	2002	2003	2004	2005
Arts and Social Sciences	13.5%	12.6%	12.6%	14.2%	14.5%
Asia and the Pacific	21.5%	22.3%	21.7%	21.9%	23.4%
Business and Economics	1.9%	2.5%	3.4%	4.1%	4.7%
Engineering and Computer Science	10.7%	10.1%	11.7%	14.4%	16.7%
Law	0.9%	1.0%	1.0%	1.5%	1.7%
Medicine and Health Sciences	76.9%	75.7%	81.7%	51.3%	37.4%
Science	25.1%	23.1%	24.7%	27.6%	29.1%
National Comparison					
The Australian National University	13.6%	12.8%	13.3%	14.7%	15.4%
All Other Go8 Universities	7.9%	7.6%	7.7%	8.0%	8.1%
All Other Australian Universities	3.6%	3.5%	3.5%	3.5%	3.7%
All Australian Universities	5.1%	4.9%	4.9%	4.8%	5.0%

Source: Data Warehouse & Annual Report

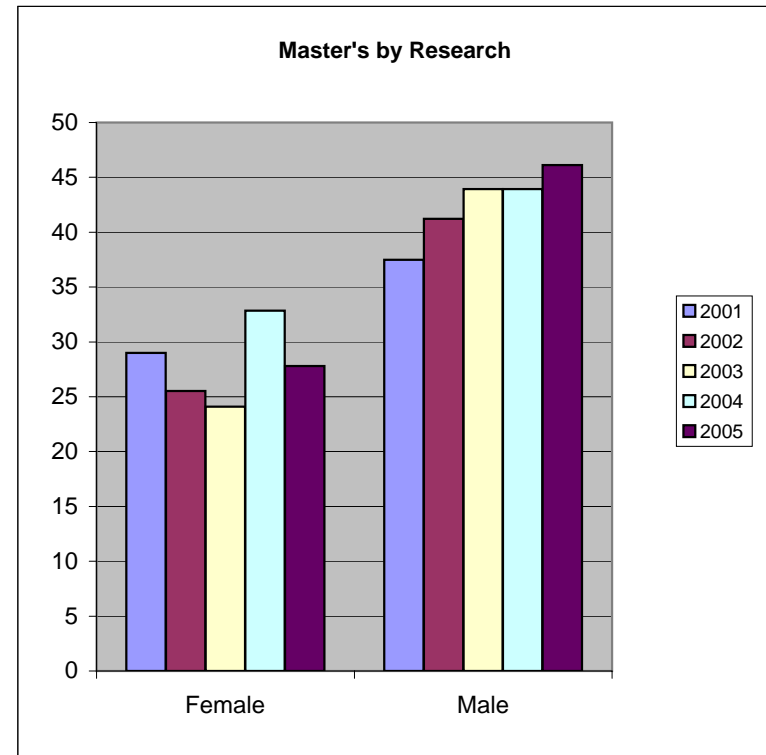
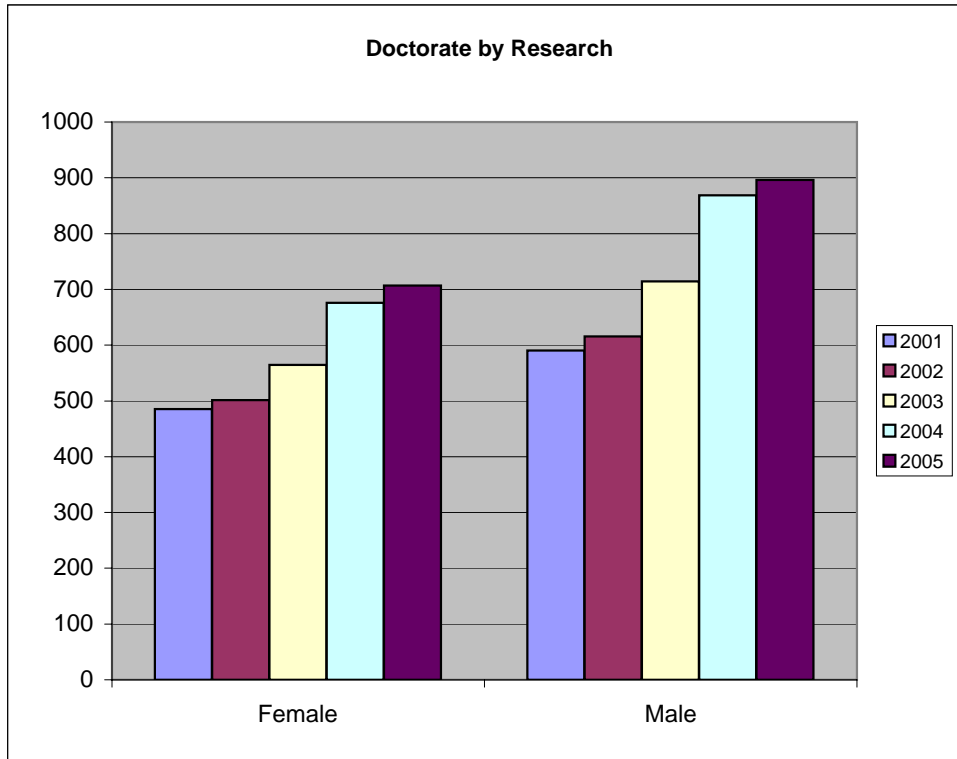


[Back to Section 2 Index](#)

Table 2.4.3 - Higher Degree Research EFTSL by Program Type and Gender

Program Type	Gender	2001	2002	2003	2004	2005
Doctorate by Research	Female	486	502	564	676	707
	Male	590	616	715	869	896
	Total	1076	1117	1279	1544	1603
Master's by Research	Female	29	26	24	33	28
	Male	38	41	44	44	46
	Total	67	67	68	77	74
Grand Total		1142	1184	1347	1621	1677

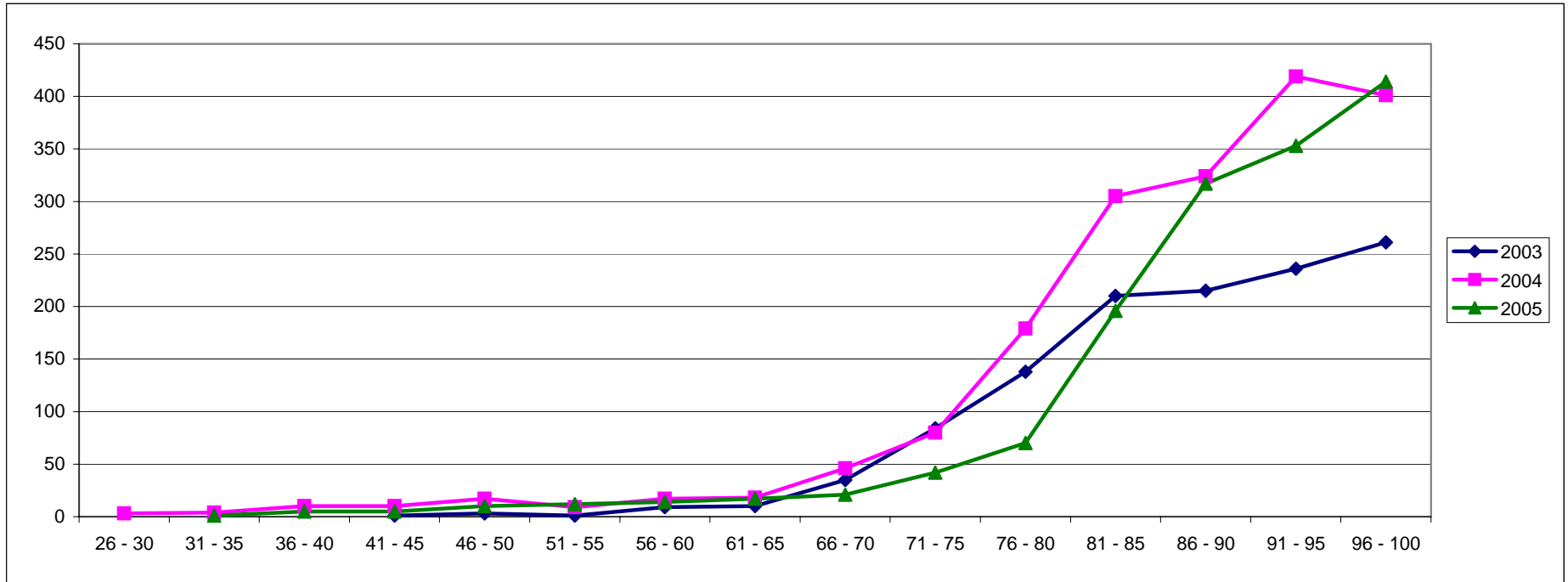
Source: Data Warehouse



[Back to Section 2 Index](#)

Chart 2.4.4 - Percentage Commencing Domestic Undergraduate by Tertiary Entrance Rank

Cutoffs for Core Programs: 2003 = 76 UAI; 2004 = 80 UAI; and 2005 = 85 UAI.



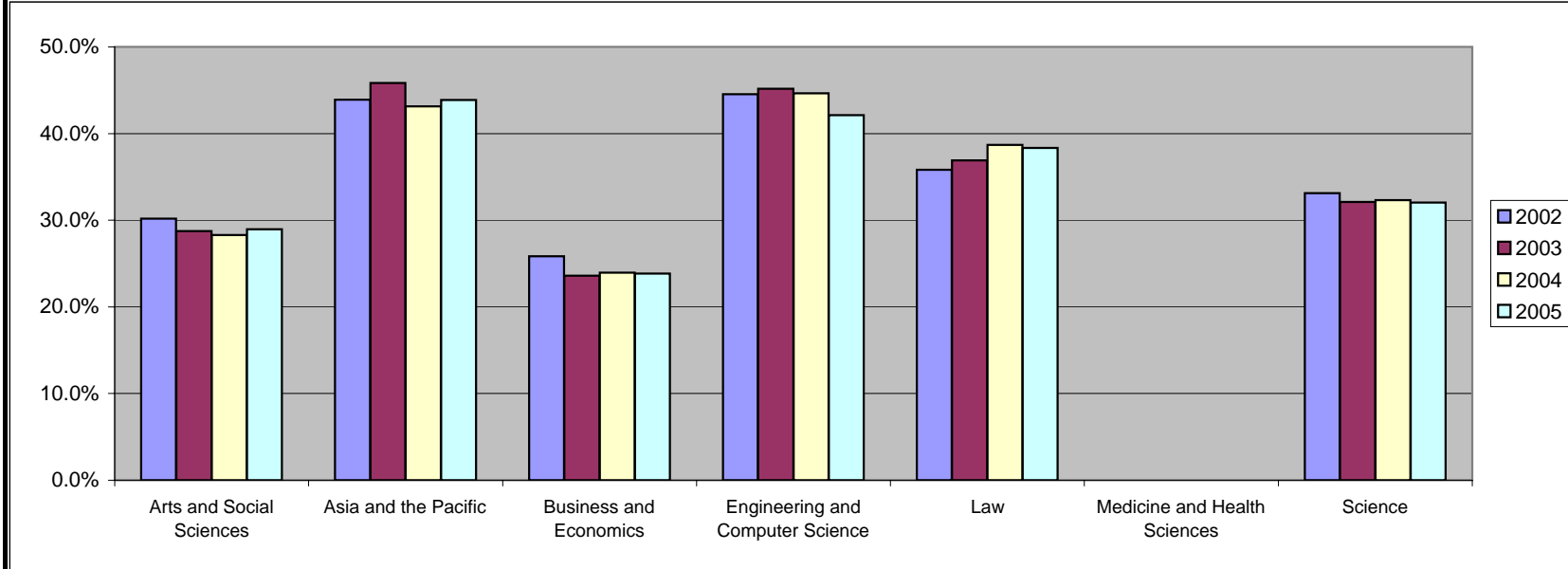
Source: Data Warehouse

[Back to Section 2 Index](#)

Table 2.4.5 - Percentage of Cross College Load by Home College

College	2001	2002	2003	2004	2005
Arts and Social Sciences	31.3%	30.2%	28.7%	28.3%	29.0%
Asia and the Pacific	41.4%	43.9%	45.9%	43.1%	43.9%
Business and Economics	30.7%	25.8%	23.6%	24.0%	23.8%
Engineering and Computer Science	46.3%	44.5%	45.2%	44.6%	42.1%
Law	36.2%	35.8%	36.9%	38.7%	38.4%
Medicine and Health Sciences					
Science	35.4%	33.1%	32.1%	32.3%	32.0%

Source: Data Warehouse



[Back to Section 2 Index](#)

Table 2.5 - Progress Rates by Program Career and College

Program Career	College	2001	2002	2003	2004	2005
Higher Degree Coursework	Arts and Social Sciences	93.1%	95.7%	96.6%	98.6%	96.0%
	Asia and the Pacific	98.2%	96.8%	97.7%	98.5%	97.7%
	Business and Economics	98.4%	98.9%	98.1%	98.2%	97.2%
	Engineering and Computer Science	97.3%	96.5%	90.6%	91.3%	94.6%
	Law	91.5%	93.5%	94.9%	92.3%	94.2%
	Medicine and Health Sciences	100.0%	100.0%	33.3%	0.0%	98.6%
	Science	98.7%	99.4%	98.7%	99.5%	96.6%
Other Postgraduate	Arts and Social Sciences	94.7%	96.8%	91.0%	92.3%	88.9%
	Asia and the Pacific	97.2%	96.4%	94.2%	95.8%	96.4%
	Business and Economics	86.0%	86.6%	90.4%	87.7%	85.1%
	Engineering and Computer Science	95.2%	92.7%	76.5%	84.0%	64.7%
	Law	98.8%	98.7%	98.1%	97.2%	97.3%
	Medicine and Health Sciences	78.6%	100.0%	100.0%		
	Science	96.7%	95.8%	97.9%	97.6%	99.1%
Undergraduate	Arts and Social Sciences	88.1%	86.4%	87.5%	88.6%	89.9%
	Asia and the Pacific	87.4%	86.0%	86.9%	88.4%	92.2%
	Business and Economics	86.5%	84.5%	84.0%	84.9%	87.7%
	Engineering and Computer Science	86.6%	84.6%	85.3%	84.8%	88.5%
	Law	93.8%	93.4%	93.0%	93.9%	93.9%
	Medicine and Health Sciences				97.5%	99.4%
	Science	86.5%	85.1%	86.4%	87.4%	91.4%
Other	Arts and Social Sciences	94.7%	77.1%	77.1%	99.5%	98.9%
	Asia and the Pacific	94.0%	81.7%	71.2%	99.5%	99.2%
	Business and Economics	87.1%	76.4%	91.7%	97.1%	99.4%
	Engineering and Computer Science	82.1%	100.0%	76.0%	100.0%	99.6%
	Law	100.0%	100.0%	100.0%	94.3%	100.0%
	Medicine and Health Sciences	95.7%	91.3%	100.0%	98.9%	99.8%
	Science	99.4%	84.2%	86.1%	99.5%	99.4%

Source: Data Warehouse

[Back to Section 2 Index](#)

Table 2.6.1 - Higher Degree Research Completions by College and Student Origin

College	Origin	2001	2002	2003	2004	2005
Arts and Social Sciences	Domestic	49	44	60	42	67
	International	14	12	12	22	17
	Total	63	56	72	64	84
Asia and the Pacific	Domestic	22	19	23	20	18
	International	10	15	13	13	26
	Total	32	34	36	33	44
Business and Economics	Domestic	13	5	7	6	7
	International	5	8	2	3	4
	Total	18	13	9	9	11
Engineering and Computer Science	Domestic	11	14	11	10	15
	International	10	4	1	3	7
	Total	21	18	12	13	22
Law	Domestic	4	5	1	1	2
	International	2				
	Total	6	5	1	1	2
Medicine and Health Sciences	Domestic	20	17	16	19	17
	International	5	2	5	8	7
	Total	25	19	21	27	24
Science	Domestic	74	70	72	84	94
	International	46	21	30	29	22
	Total	120	91	102	113	116
Grand Total		285	236	253	260	303

Source: Data Warehouse

[Back to Section 2 Index](#)

Table 2.6.2 - Postgraduate Coursework Completions by College and Student Origin

College	Origin	2001	2002	2003	2004	2005
Arts and Social Sciences	Domestic	50	67	61	106	114
	International	24	44	48	49	45
	Total	74	111	109	155	159
Asia and the Pacific	Domestic	51	53	61	170	176
	International	154	133	186	245	237
	Total	205	186	247	415	413
Business and Economics	Domestic	111	73	140	116	101
	International	157	136	284	448	282
	Total	268	209	424	564	383
Engineering and Computer Science	Domestic		2	4	8	8
	International			4	38	40
	Total	0	2	8	46	48
Law	Domestic	220	204	185	305	378
	International	5	13	15	10	24
	Total	225	217	200	315	402
Medicine and Health Sciences	Domestic	12	16	10	10	13
	International			3		1
	Total	12	16	13	10	14
Science	Domestic	38	45	60	38	42
	International	4	11	15	26	20
	Total	42	56	75	64	62
Grand Total		826	797	1076	1569	1481

Source: Data Warehouse

[Back to Section 2 Index](#)

Table 2.6.3 - Undergraduate Completions by College and Student Origin

College	Origin	2002	2003	2004	2005
Arts and Social Sciences	Domestic	554	681	871	878
	International	12	43	47	38
	Total	566	724	918	916
Asia and the Pacific	Domestic	144	149	130	148
	International	6	7	6	9
	Total	150	156	136	157
Business and Economics	Domestic	432	458	459	385
	International	63	122	166	196
	Total	495	580	625	581
Engineering and Computer Science	Domestic	153	229	192	139
	International	11	49	33	34
	Total	164	278	225	173
Law	Domestic	297	315	326	315
	International	3	7	8	8
	Total	300	322	334	323
Science	Domestic	610	424	555	591
	International	18	22	39	48
	Total	628	446	594	639
ANU Total¹	Domestic	1514	1689	1978	1898
	International	108	234	273	316
Grand Total¹	Total	1622	1923	2251	2214

Source: Data Warehouse

¹ Total will not equal the sum of each College as double counting occurs in the case of combined degrees[Back to Section 2 Index](#)

Section 3 - Key Performance Indicators

Table 3.1.1 - Membership of Academies for 2006

Table 3.1.2 - ARC Fellowships for 2004 to 2006

Table 3.2 - Undergraduate Operating Grant Load against Government Targets

Table 3.3.1 - New ARC Linkage-Projects for 2004 and 2005

Table 3.3.2 - National Health and Medical Research Council Projects Grants

Table 3.4 - Learning and Teaching Performance Fund 2007

[Back to Contents Page](#)

Table 3.1.1 - Membership of Academies for 2006

	Royal Society (as at June 2006)	Australian Academy of Science (as at June 2006)	Australian Academy of Technology, Science & Engineering (as at June 2006)	Australian Academy of Social Sciences (as at June 2006)	Australian Academy of the Humanities (as at June 2006)	Total Australian Academies
The Australian National University	28	88	19	82	61	250
College of Arts & Social Sciences	0	1	0	39	32	72
College of Asia & the Pacific	0	0	0	29	27	56
College of Business & Economics	0	0	0	3	0	3
College of Engineering & Computer Science	1	4	6	0	1	11
College of Law	0	0	0	3	1	4
College of Medicine & Health Sciences	3	9	1	2	0	12
College of Science	24	74	12	6	0	92
All Other Group of Eight	18	160	83	171	160	574
Monash University	0	12	13	21	24	70
University of Adelaide	2	15	5	14	8	42
University of Melbourne	7	43	22	43	44	152
University of New South Wales	0	19	11	23	14	67
University of Queensland	1	13	7	27	17	64
University of Sydney	6	41	16	26	38	121
University of Western Australia	2	17	9	17	15	58
All Other Australian Universities	1	37	39	89	84	249
All Australian Universities	47	285	141	342	305	1073

[Back to Section 3 Index](#)

Table 3.1.2 - ARC Fellowships for 2004 to 2006

	New ARC Fellowships in All Categories for APD, ARF/QEII, APF		
	Number	% of Total Academic FTE ⁽¹⁾	Go8 Rank
2004			
The Australian National University	27	3.40	1
All Other Group of Eight Universities	92	1.10	
All Other Australian Universities	47	0.40	
All Australian Universities	166	0.80	
2005			
The Australian National University	27	1.99	1
All Other Group of Eight Universities	94	0.71	
All Other Australian Universities	44	0.24	
All Australian Universities	165	0.50	
2006			
The Australian National University	17	1.18	2
All Other Group of Eight Universities	102	0.74	
All Other Australian Universities	48	0.25	
All Australian Universities	167	0.49	
2002-2005 Federation Fellowships			
The Australian National University	20		
All Other Group of Eight Universities	76		
All Other Australian Universities	25		
All Australian Universities	121		

Source: Annual Report

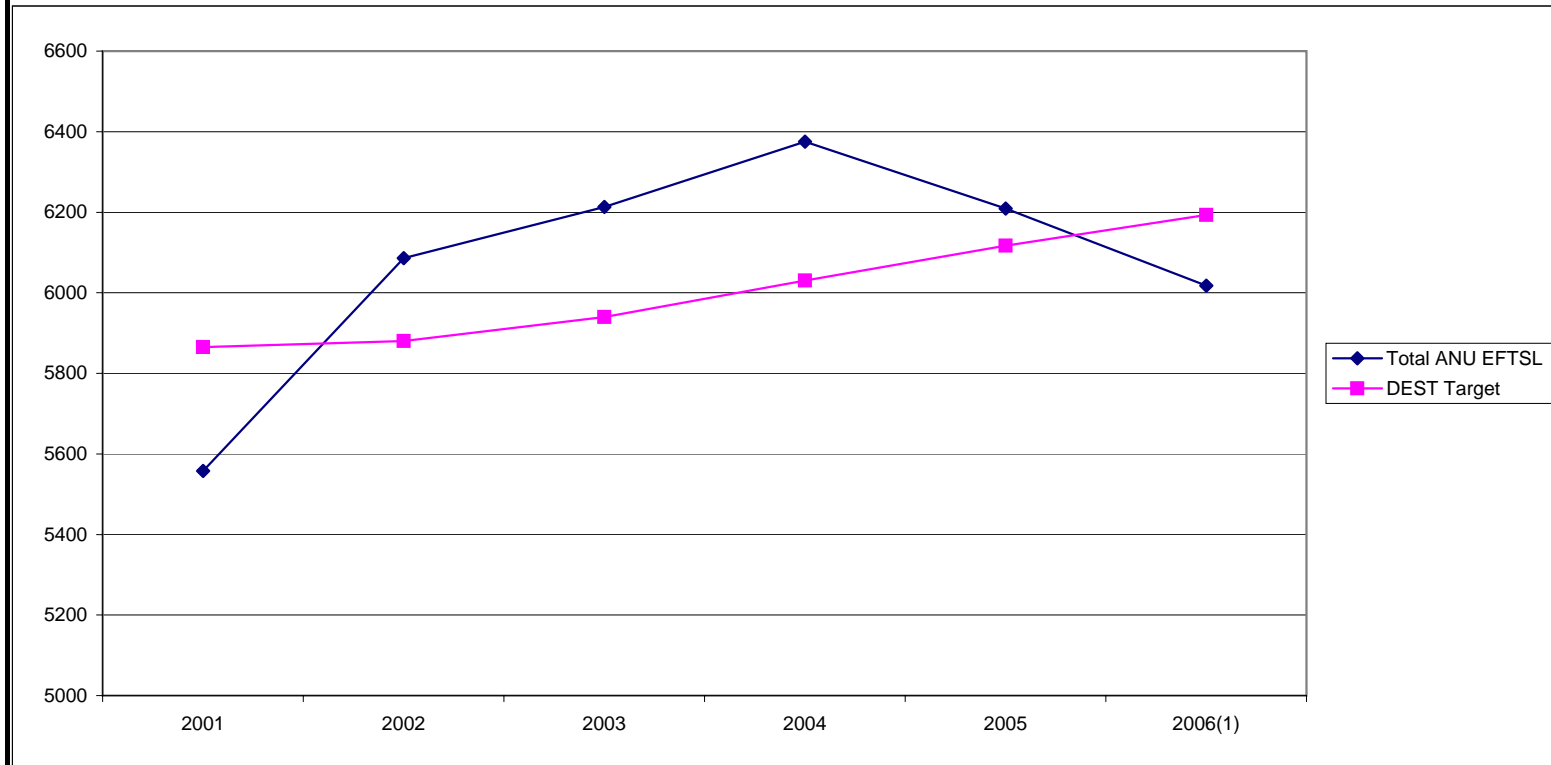
[Back to Section 3 Index](#)

Table 3.2 - Undergraduate Operating Grant Load against Government Targets

	2001	2002	2003	2004	2005	2006 ⁽¹⁾
Total ANU EFTSL	5557	6086	6213	6375	6209	6018
DEST Target	5865	5880	5940	6030	6117	6193
Over(under)-enrolment	-5.2%	3.5%	4.6%	5.7%	1.0%	-2.8%

Source: Annual Report

(1) Provisional figures apply



[Back to Section 3 Index](#)

Table 3.3.1 - New ARC Linkage-Projects for 2004 and 2005

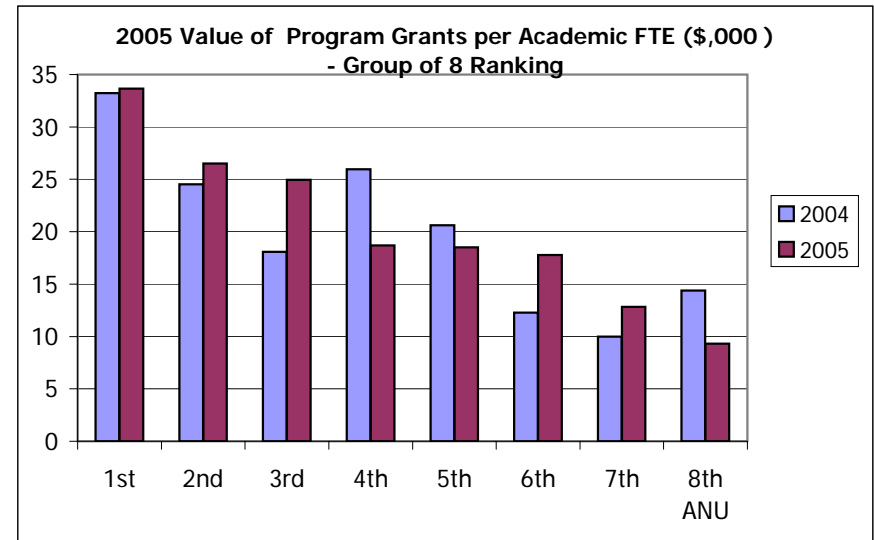
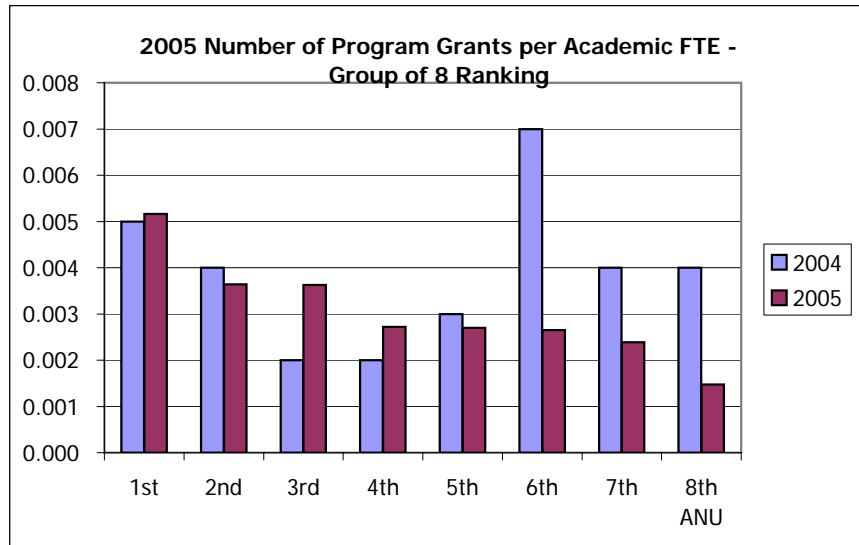
	Number of New Grants	New ARC Discovery Grants per Academic ⁽¹⁾ FTE		\$ Value of New Grants	New ARC Discovery Grants per Academic ⁽¹⁾ FTE	
		Number	Go8 Rank		\$'000	Go8 Rank
2004						
The Australian National University	115	0.092	1	34,698,338	27.9	1
All Other Group of Eight Universities	458	0.036		129,542,075	10.2	
All Other Australian Universities	295	0.016		72,180,951	4.0	
All Australian Universities	868	0.027		236,421,364	7.4	
2005						
The Australian National University	117	0.086	1	38,838,641	28.7	1
All Other Group of Eight Universities	593	0.050		177,041,523	14.9	
All Other Australian Universities	342	0.017		80,755,889	4.1	
All Australian Universities	1052	0.032		296,636,053	9.0	
2006						
The Australian National University	113	0.078	1	36,184,535	25.1	1
All Other Group of Eight Universities	524	0.038		162,918,849	11.8	
All Other Australian Universities	275	0.014		73,142,369	3.8	
All Australian Universities	912	0.027		272,245,753	7.9	
2007⁽²⁾						
The Australian National University	100	0.069		35,099,611	24.3	
All Other Group of Eight Universities	479			168,905,438		
All Other Australian Universities	238			69,526,267		
All Australian Universities	817			273,531,316		

Source Annual Report

[Back to Section 3 Index](#)

Table 3.3.2 - National Health and Medical Research Council Projects Grants

	Number of Program Grants	Program Grants per Academic FTE ⁽¹⁾		\$ Value of Program Grants	Program Grants per Academic FTE ⁽¹⁾	
		Number	Go8 Rank		\$	Go8 Rank
2004						
The Australian National University	5	0.0040	4	17,942,944	14,400	6
All Other Group of Eight Universities	47	0.0040		244,787,326	19,220	
All Other Australian Universities	2	0.0000		8,425,580	470	
All Australian Universities	54	0.0020		271,155,850	6,807	
2005						
The Australian National University	2	0.0015	8	12,625,000	9,324	8
All Other Group of Eight Universities	42	0.0032		281,641,958	21,325	
All Other Australian Universities	2	0.0001		13,895,585	752	
All Australian Universities	46	0.0014		308,162,543	9,326	



(1) Calculated on the Total Academic FTE for the University or group of universities. Academic FTE based on previous year's FTE, as applicable.

Source Annual Report

Back to Section 3 Index

Table 3.4 - Learning and Teaching Performance Fund 2007

Performance Indicator	Discipline Group							
	Science, Computing, Engineering, Architecture & Agriculture		Business, Law & Economics		Humanities, Arts & Education		Health	
	ANU	All Universities	ANU	All Universities	ANU	All Universities	ANU	All Universities
Student Satisfaction								
Satisfaction with Generic Skills	82.67	73.97	70.99	71.48	70.68	72.09	79.12	70.81
Satisfaction with Good Teaching	54.20	47.54	39.14	40.73	56.99	56.39	27.76	47.07
Overall Satisfaction	79.97	69.49	72.29	68.93	76.29	71.03	74.10	67.35
Outcomes								
Full-time employment	81.19	76.36	82.88	80.05	67.50	71.72	100.00	91.87
Further full-time and part-time study	42.08	32.33	39.97	26.21	34.06	30.02	0.00	20.35
Success								
All Bachelor students' progress rates	86.07	80.74	85.87	81.92	90.11	85.37	99.34	89.95
Commencing Bachelor Students' retention rate	85.03	81.77	89.13	82.08	89.48	80.35	95.18	85.71

Notes:

Uses 2005 progress rates.

A zero value signifies at least one university recording zero students with a response in this indicator and discipline group.

Source: Annual Report

Back to Section 3 Index

Section 4 - Internationalisation

Table 4.1 - International undergraduate enrolments as a percentage of total undergraduate enrolments

Table 4.2 - International undergraduate enrolments as a percentage of total undergraduate enrolments per School

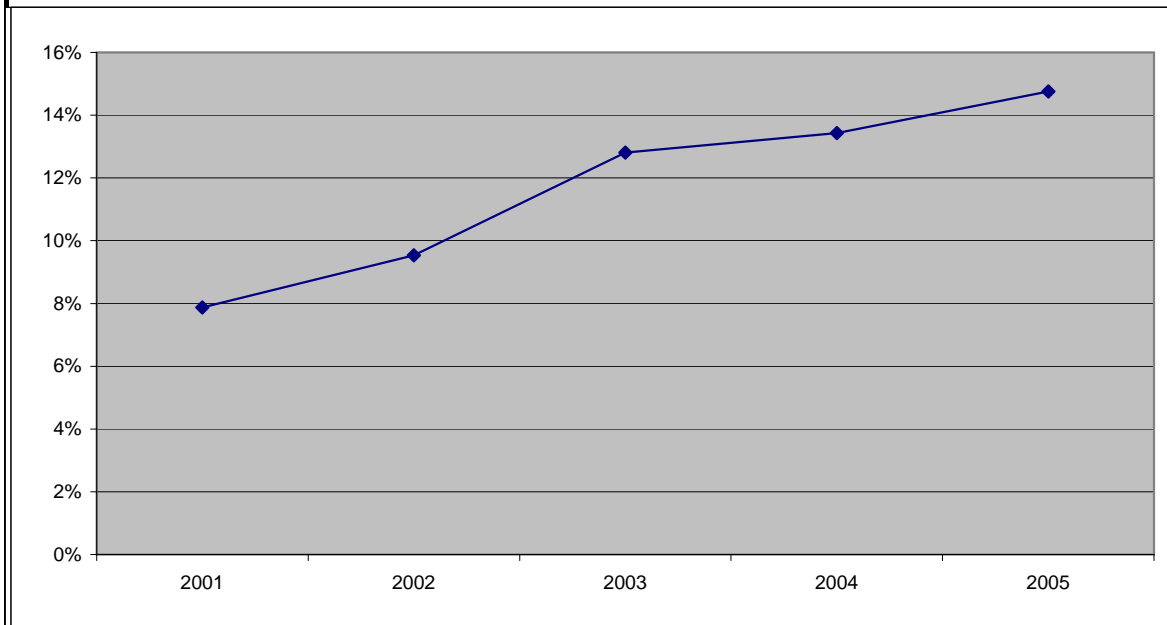
Chart 4.2.1 - International undergraduate enrolments as a percentage of total undergraduate enrolments per School

[Back to Contents Page](#)

Table 4.1 - International undergraduate enrolments as a percentage of total undergraduate enrolments

All Colleges	2002	2003	2004	2005
Domestic	7539	7723	7945	7646
International	795	1134	1233	1324
Total	8334	8857	9178	8970
% International	10%	13%	13%	15%

Source: Data Warehouse



[Back to Section 4 Index](#)

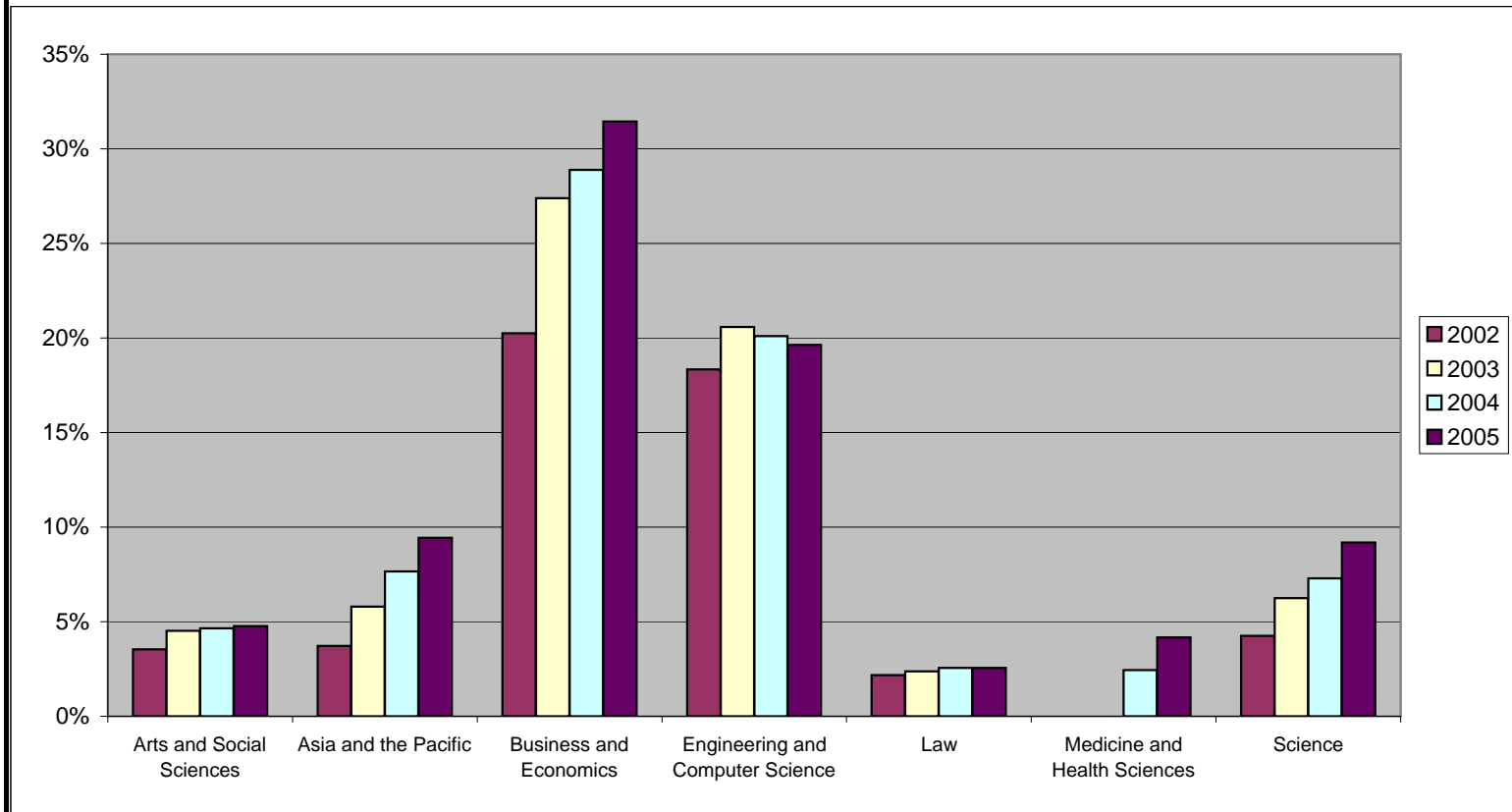
Table 4.2 - International undergraduate enrolments as a percentage of total undergraduate enrolments per School

College	Origin	2002	2003	2004	2005
Arts and Social Sciences	Domestic	3442	3575	3650	3477
	International	126	169	178	174
	Total	3568	3744	3828	3651
	% International	4%	5%	5%	5%
Asia and the Pacific	Domestic	698	714	736	682
	International	27	44	61	71
	Total	725	758	797	753
	% International	4%	6%	8%	9%
Business and Economics	Domestic	1745	1818	1822	1753
	International	443	686	740	804
	Total	2188	2504	2562	2557
	% International	20%	27%	29%	31%
Engineering and Computer Science	Domestic	904	891	867	819
	International	203	231	218	200
	Total	1107	1122	1085	1019
	% International	18%	21%	20%	20%
Law	Domestic	1438	1401	1448	1449
	International	32	34	38	38
	Total	1470	1435	1486	1487
	% International	2%	2%	3%	3%
Medicine and Health Sciences	Domestic			80	161
	International			2	7
	Total			82	168
	% International			2%	4%
Science	Domestic	2069	2119	2138	2046
	International	92	141	168	207
	Total	2161	2260	2306	2253
	% International	4%	6%	7%	9%

Source: Data Warehouse

[Back to Section 4 Index](#)

Chart 4.2.1 - International undergraduate enrolments as a percentage of total undergraduate enrolments per School



Source: Data Warehouse

[Back to Section 4 Index](#)